

नामेश्वर



Location

Taluka: Nanded

District : Nanded

State: Maharashtra

Region: Marathwada

Division: Aurangabad

Neighboring Villages

Rahati (4 KM)

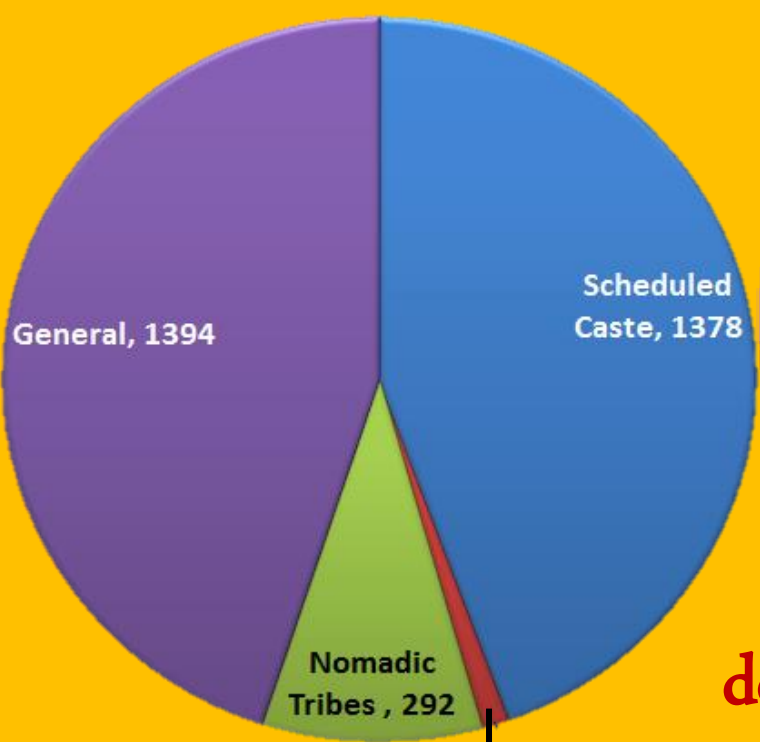
Waghi (4 KM)

Limbgaon (4 KM)

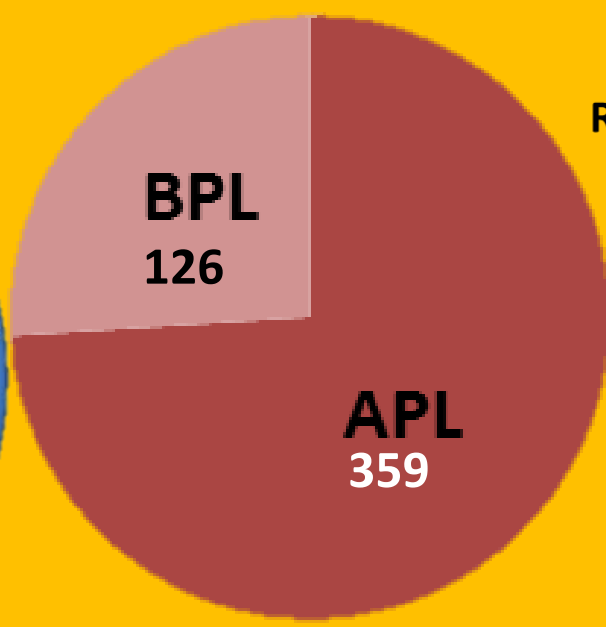
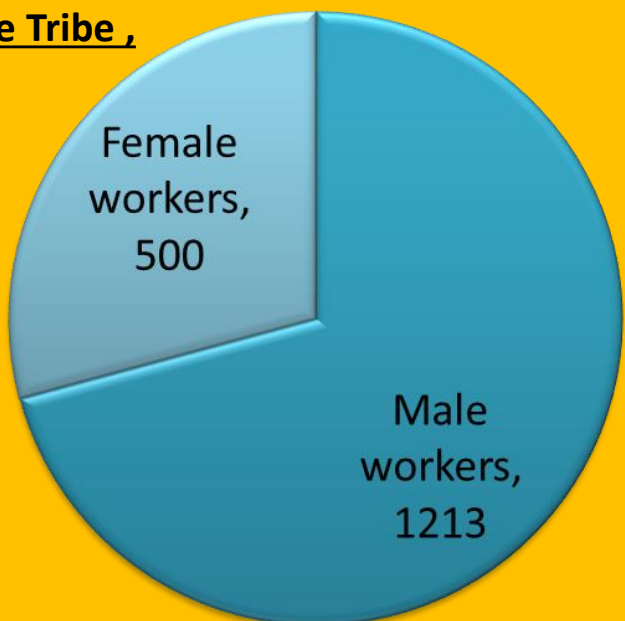
Pokharni (5 KM)

Sayal (5 KM)

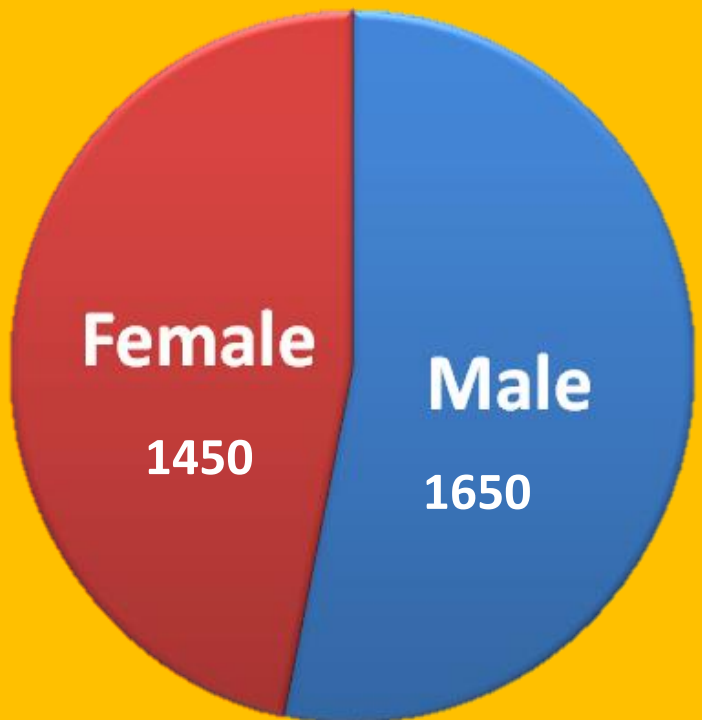
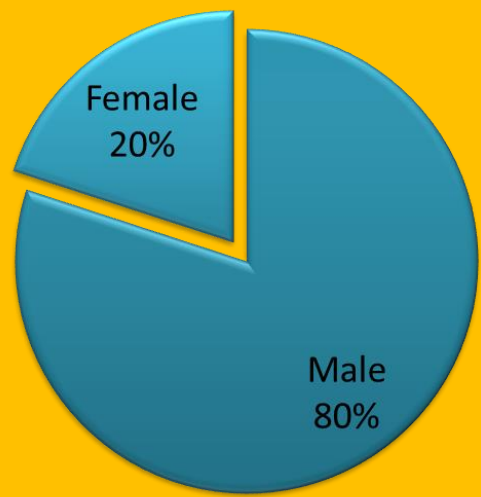




Schedule Tribe ,
36



Representation in Panchayat



demography

PARTICIPATIVE LEARNING ACTIVITIES



• Transact Walk

• Timeline

• Resource Map

• Social Map

• Seasonality

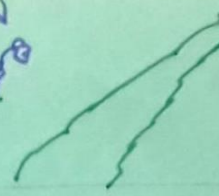
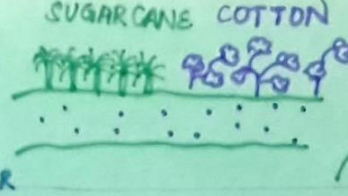
• Preference Ranking

• Venn Diagram

Transact walk...



TRANSACT WALK



PASSAGE

MAIN SETTLEMENTS

FIELDS

ANNEXURE

GRADIENT

Flat

Flat

Flat

Flat

SOIL

Black Soil

Black Soil

Black Cotton Soil

Black Soil.

LAND USE

Path
Vehicles

Houses, Shops,
Bank, School,
Temple, Water Tank,
Community Centre

Horticulture,
Jowar, Juarmeric,
Wheat, Ginger,
Cotton,
Soya, Sugarcane

Waste Land,
Grazing Land,
Garbage Dump,
Playground

VEGETATION

Banyan
Peepal, Neem,
Eucalyptus,
Bushes

Banyan,
Peepal, Neem

Tamarind,
Teak,
Coconut

Bushes.

PROBLEMS

Open Defaecation
Garbage
Drainage

Drinking Water,
Sanitation,
No PHC,
Less Vegetation,
Status of ♀

Irrigation (small farmers)
Low yield
Traditional Method
Less Rain

Sanitation
Lack of
Vegetation

OPPORTUNITIES

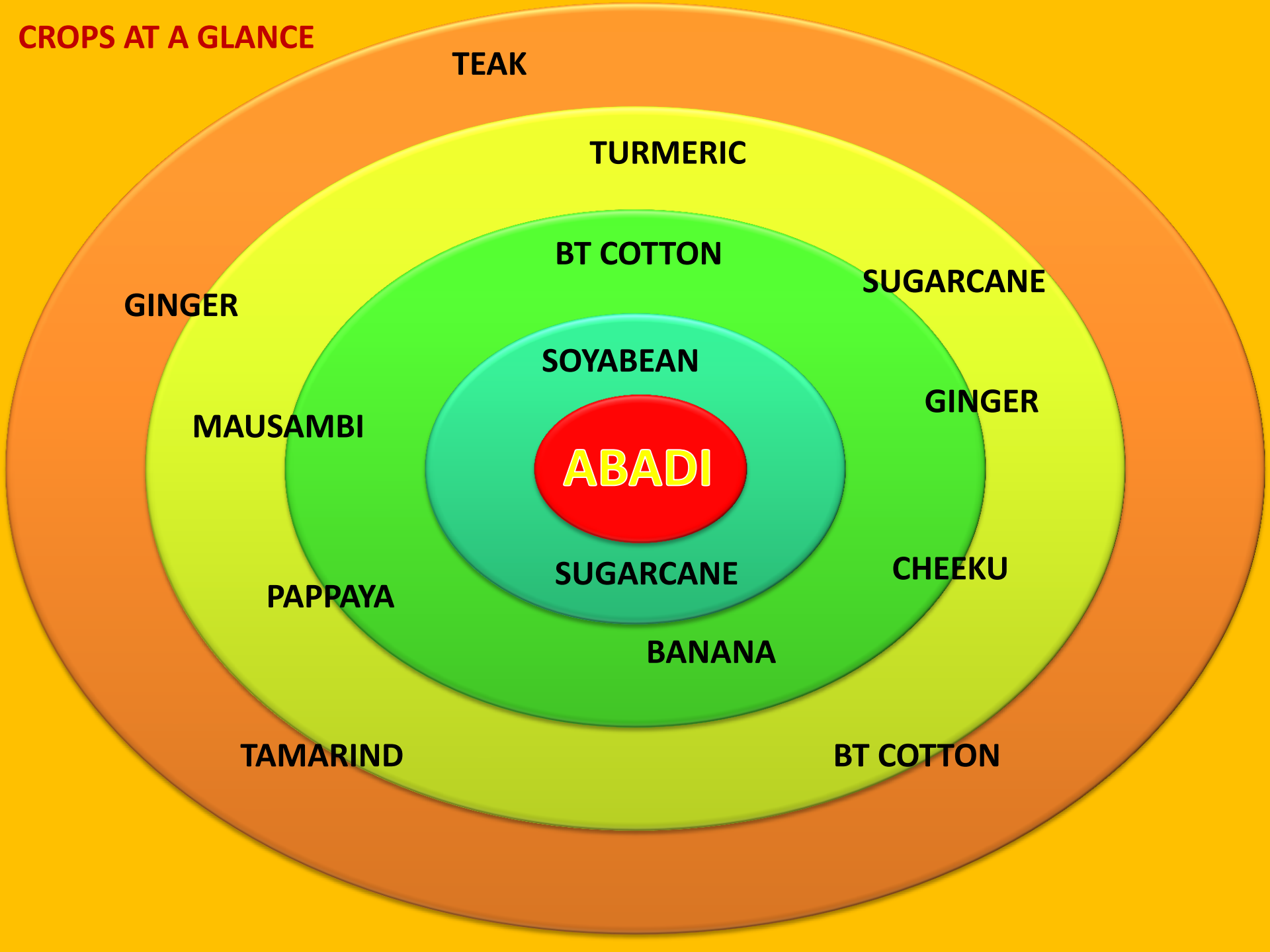
- Cleanliness drive.

- Govt. School till 8
- Open PHC in vilg.
- Employment

- Rain Water Harvesting
- Contract farming
- Better seeds

- Environment Consciousness
- Better land use

CROPS AT A GLANCE



TEAK

TURMERIC

BT COTTON

SUGARCANE

GINGER

SOYABEAN

MAUSAMBI

SUGARCANE

CHEEKU

PAPPAYA

BANANA

TAMARIND

BT COTTON

GINGER

TimeLine Discussion



13th Century **Puratan Mahadev Mandir: Nageshwar Temple constructed**

Village named Naleshwar

1725 to 1948 Under Hyderabad state of Nizam



TIMELINE

1989 **Branch of Cooperative Bank opened**

Community Hall constructed

1991 **Horticulture** , Use of Tractor began

1995 First Pucca House

1997 **Telephone** service started

Construction of water Tank started

2002 Veterinary Hospital became functional

Anganwadi started

2003 Emigration to Pune for construction work began

2004 BT cotton seeds used for first time

Private School, Yashwant Vidyalay started

2011 **Village Library** Started

2013 **Drinking water pipeline** from Godavari

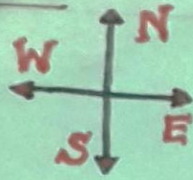
2014 **Solar** street lights

2014 Drought like situation (Around 45% rainfall)

Getting to know our resources...



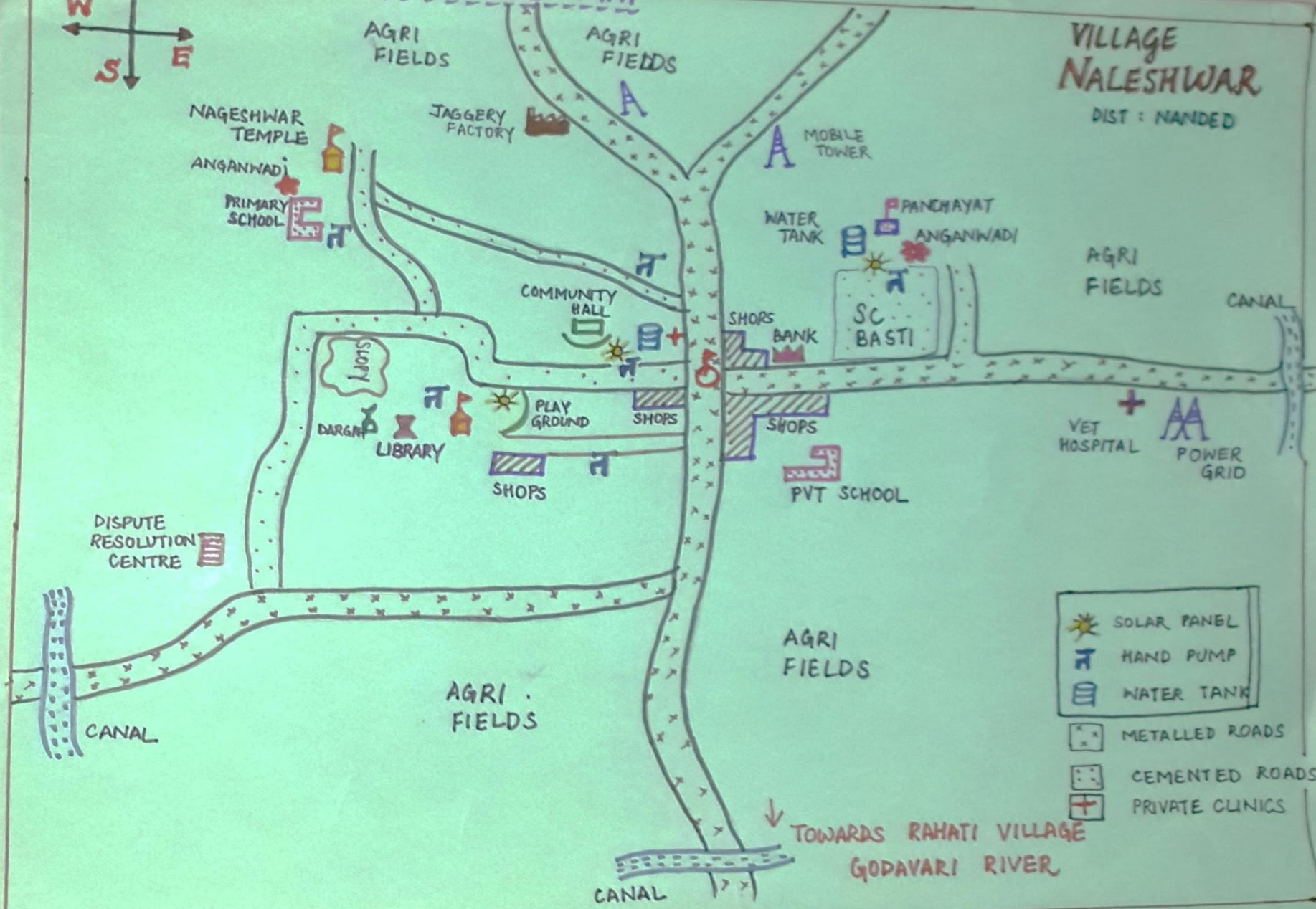
RESOURCE MAPPING



RESOURCE MAP

VILLAGE NALESHWAR

DIST : Nanded

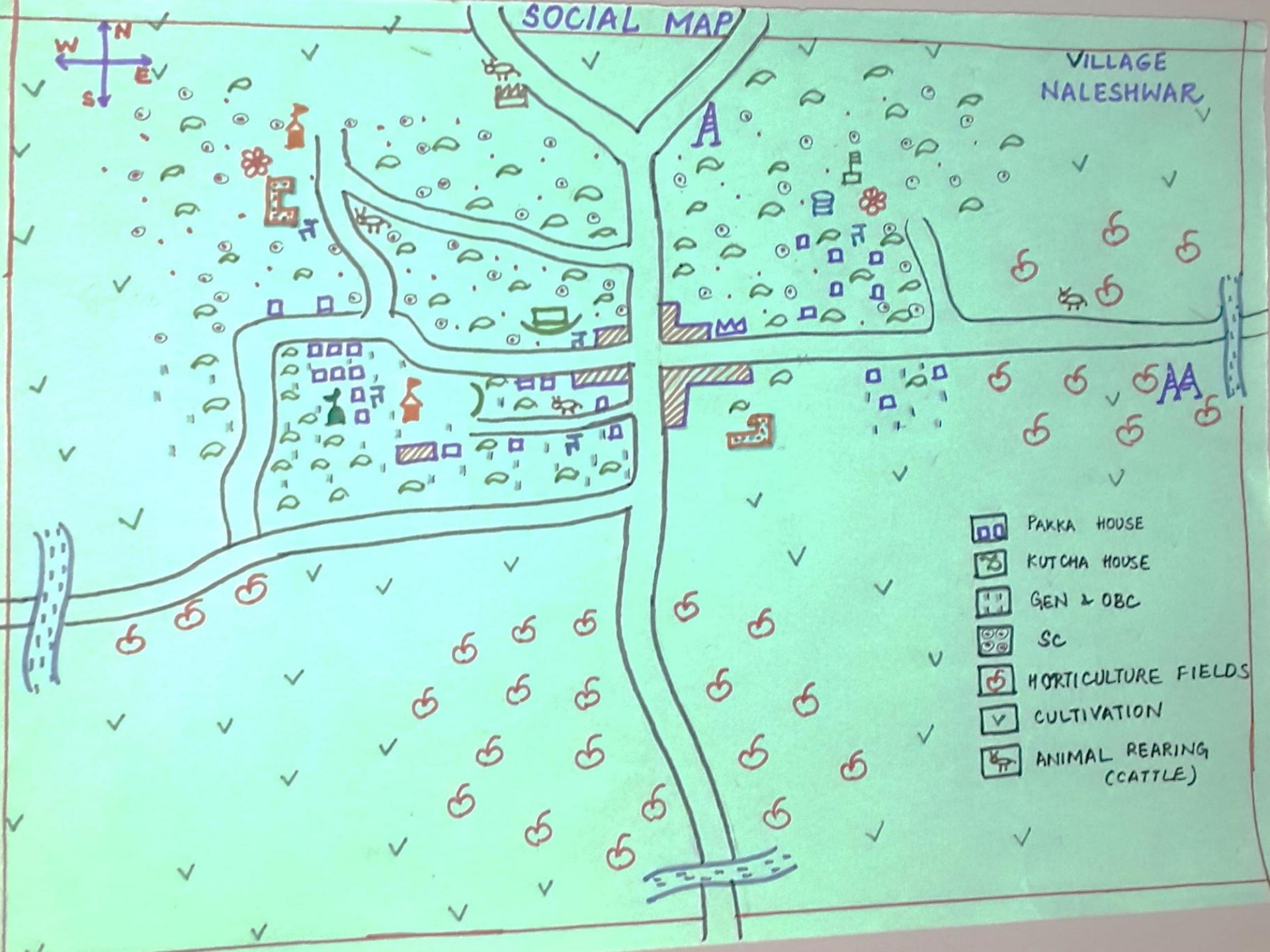




Social mapping..

SOCIAL MAP

VILLAGE
NALESHWAR

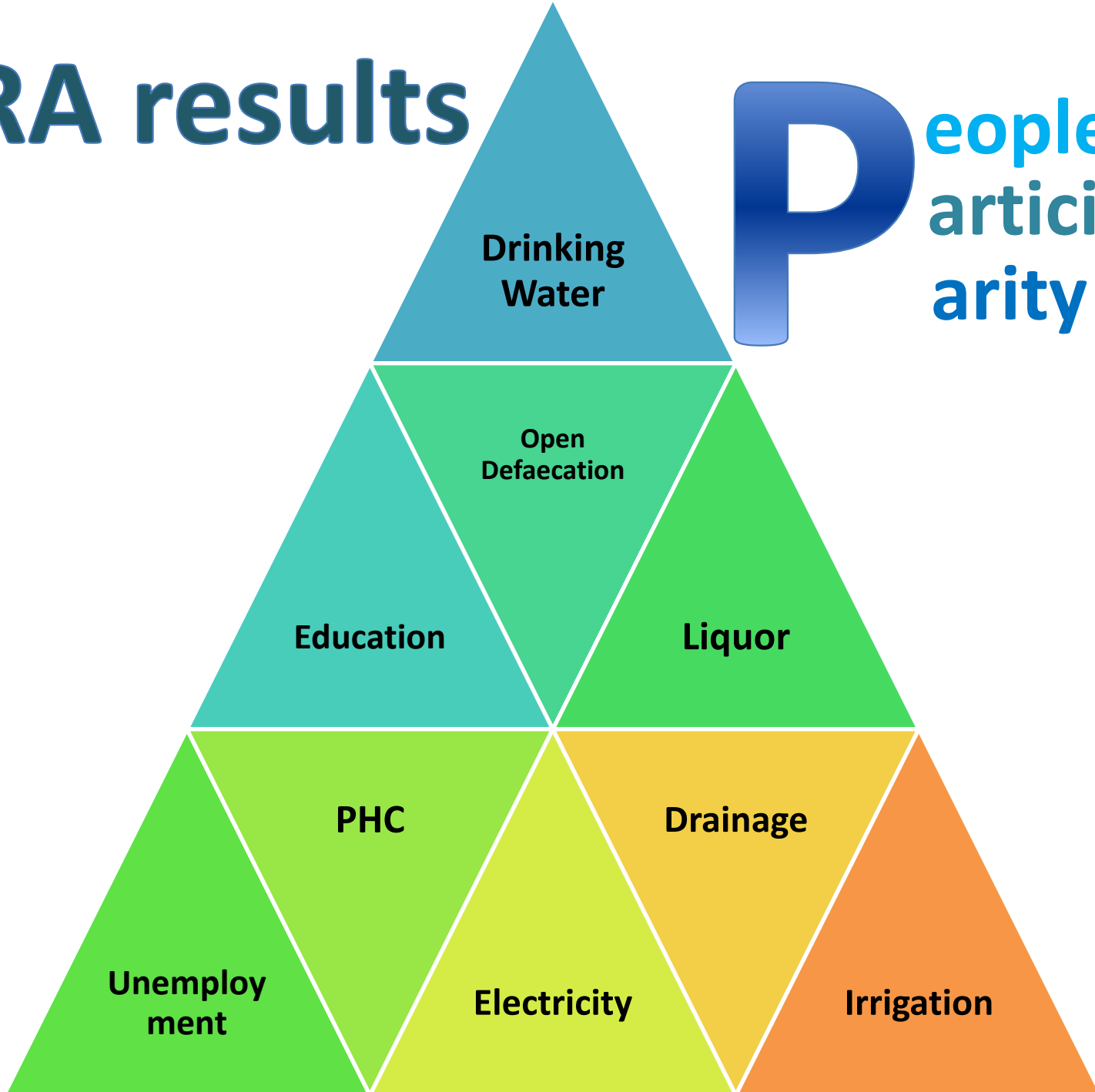


Preference Ranking Activity



PRA results

People
articipation
arity



Seasonality Analysis

[illegible]

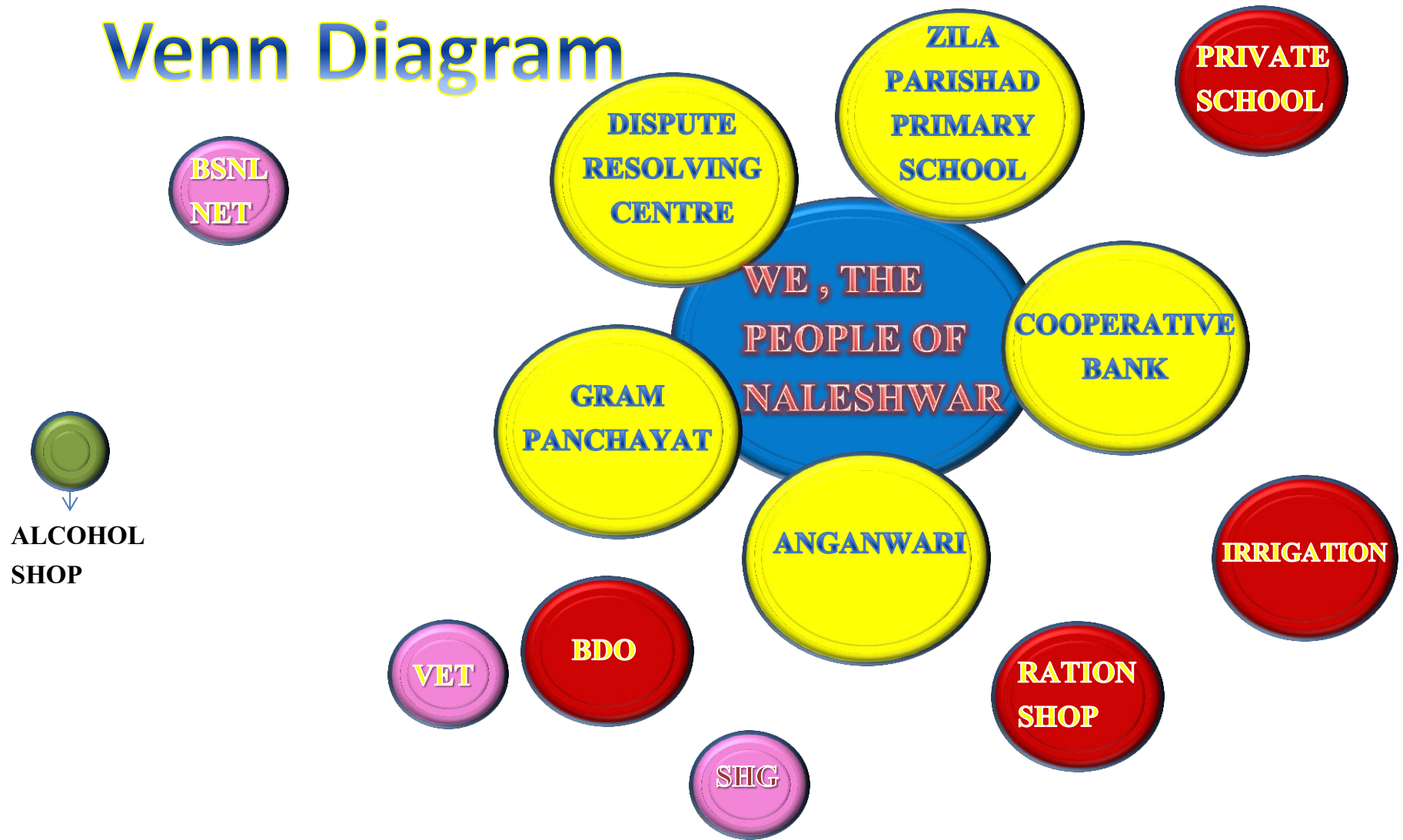
Our Institutions...



How close we are to them?

Janmat

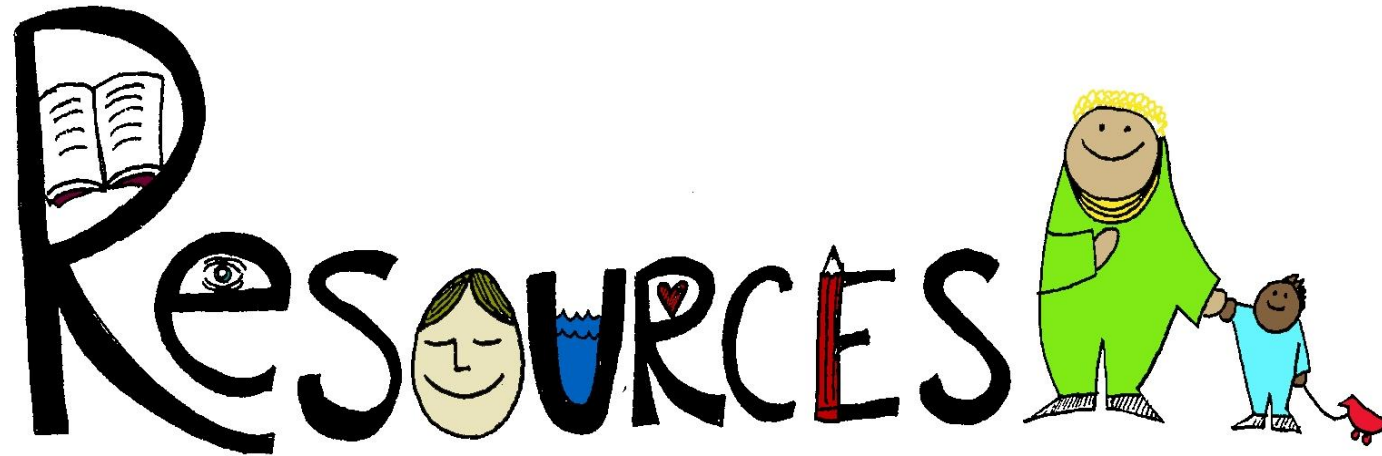
Venn Diagram





Focus group interviews





- Human
- Natural – Fertile Soil , Godavari proximity , Livestock
- Infrastructure
- Cultural Heritage

Children... Our greatest resource



Sanitation for All Toilet First





The future of India lies in its villages...

M.K.Gandhi

Evenings... Discussions about the basics of hygiene and sanitation





Live stock



Physical Infrastructure

DRAINAGE



COMMUNITY HALL



SOLAR PANELS



BANK



WATER RESOURCES



WATER TANK

SCHOOL



GRAM PANCHAYAT



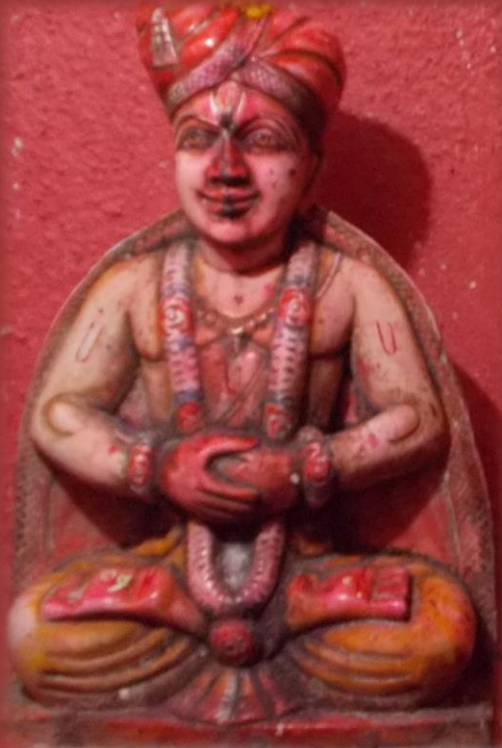


Agro - Processing
A huge potential



Cultural Heritage







Experiences from use of PLA tools

By the team:

- **Resource map:** Awareness of the villagers about their village
- **Crop map:**
 - Rain affecting productivity
 - Horticulture growing
- **Social map:** Pockets based on caste
- **Timeline:** Rich heritage
- **PRA:** Innovative ideas – Agro processing
- **Venn Diagram:** Give high importance to education
- High **girl enrollment** in school
- High Anganwadi to School conversion Ratio
- **Communal Harmony**

By villagers:

- “It felt as if the whole village was standing in front of our eyes.”
- **Resource realization**
- Increased **Confidence**
- Strength lies in **Unity**
- **Children** activities:
 - Awareness about sanitation and use of toilets
 - Hygiene basics
 - Importance of education

Lessons learnt from rural life

- Youth Fraternity - United Youth Campaign
- Simplicity of life



SCHEMES OPERATING

MAHATMA GANDHI TANTAMUKTA GAON YOJNA

NRLM

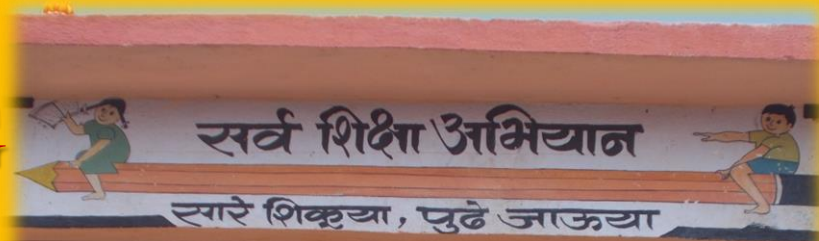
RAY

SSA

ICDS

FINANCIAL INCLUSION

ASHA





ASHA /
Angan-
wadi

Solar
Panels



Successful Implementations

Water
Pipeline
from
Godavari



Roads

Tantamukti
Bhawan



Expectations

1. **Drinking Water**
2. **Open Defecation**
3. **Education**
4. **Liquor**
5. **PHC**
6. **Drainage**
7. **Unemployment**
8. **Electricity**
9. **Irrigation**



Issues Identified for action

- Unawareness about schemes
- Missing : PHC , Post Office
- Liquor
- Sanitation - No public toilets
- Need for Water Conservation measures -Rain water harvesting





**Study
Centre for
Students**

**Single
window for
schemes**

**Water
treatment
plant**

**Government
school till
10th**

**Agro
Processing
Units**

Opportunities

A society must be built in which every village has to be self sustained and capable of managing its own affairs..

-Gandhi ji on “Gram Swaraj”


Thank You

Team:

Abhishek Tharwal, A-08

Rahul Singh, B-38

Gurvinder Kaur, A-50

Monica Kumawat, B-33

Rohit Khare, B-44